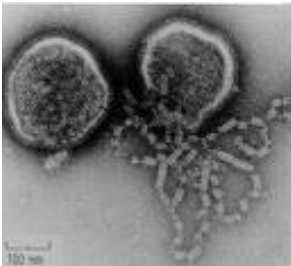


Parainfluenzavirus



Parainfluenza viruses are a group of four distinct serotypes of single-stranded RNA viruses belonging to the paramyxovirus family. They are the second most common cause of flulike respiratory tract infection in younger children.

The viruses are transmitted by droplet infection. Mainly affected are small children till the age of 3 years in temperate climate zones. A seasonal accumulation of infections in cool seasons can be recognized. Generalized contamination levels in the population are already high in childhood, 90% in 10-year-old children.

Parainfluenza viruses primary attach the pharyngeal mucosa, but can spread on the whole tracheobronchial tract. Heavy inflammatory reactions with the distribution of proinflammatory cytokines occur, may accompanied by an epiglottitis. The excessive mucous secretion may leads to the obstructions of the respiratory tract – especially in younger children.

Parainfluenza viruses type 1 and 3 cause a flulike infection in small children accompanied by fever, cough, rhinitis, bronchitis and pseudo croup. Pneumonias can occur. Bacterial superinfections are frequent, as are the usually harmless reinfections.

Infections by Parainfluenza viruses type 2 lead to similar clinical symptoms like with the type 1 and 3, the course of infection is milder.

Species	Disease	Symptoms	Mechanism of infection
Parainfluenzavirus (1, 2 und 3)	The majority of infections cause an unspecific disease of the upper and lower respiratory tract in younger children. Infections in adults are rare with a milder course of infection.	mild influenzalike diseases; fever, headache, cough, pharyngitis, bronchitis complications: broncheapneumonia, pseudo croup, bacterial superinfection	Direct or indirect contact with contaminated material, mainly droplet- and smear infection

Infections may be diagnosed by:

Immunofluorescent microscopy

Serology: Determination of specific antibodies by ELISA

NovaLisa™ Parainfluenza virus IgA/IgG ELISA:

The NovaLisa™ Parainfluenza virus IgA/IgG ELISA is intended for the qualitative determination of IgA-/IgG- class antibodies against Parainfluenza viruses in human serum or plasma (citrate).

Antigens:

Purified Parainfluenza virus antigens

Specific performance characteristics:

	Intraassay			Interassay			Sensitivity %	Specificity %
	n	Mean	CV %	n	Mean	CV %		
IgA	8	1,12	2,6	24	1,07	5,1	>90	>90
IgG	8	0,15	6,8	3	21,9	9,8	>95	>95
	8	1,03	1,6					

Order information:

ELISA	Number of determinations	Product number
Parainfluenzavirus IgA	96	PAIA0360
Parainfluenzavirus IgG	96	PAIG0360